

## Presidents Message

October 12, 2006

This is my first message in the Newsletter as the President of the Chesapeake Isle Civic Association and I'd like to express my appreciation for all of the support and assistance that I have already received from the entire community. Chesapeake Isle is a great place to live and it is my goal for this year to bring everyone closer together and to start the healing process for past problems. I know that I represent the entire Board of Directors when I say we want nothing but the best for this community and all of the residents.

We, the Board of Directors, want to focus our efforts on the things that all of you consider most important. To assist in accomplishing this we have put together a short survey, which is included on the other side of this page. I would like to ask that all of you would take a few minutes and complete the CICA Survey and send it in by November 1, 2006. You can mail it or give it to any member of the board. There is also a copy of the survey on the website, which can be filled out and directly submitted over the web. The survey asks for your name and address so we can follow up with you, if we have any questions. If you are concerned about confidentiality, then just leave this blank, we will still consider your responses.

Starting in January of 2007, board meetings will be scheduled on a regular night each month, making it easier for CICA residents to plan to attend. They will probably be held on the 2<sup>nd</sup> Thursday of each month at 7:00 p.m. at the pavilion. I'll confirm this in the next newsletter.

As you will read later in this newsletter, our Membership Committee chairperson, Les Fritz, will be retiring his position. Les has served in this function for 10+ years and we owe him a great deal of thanks for his service, and to Dotty as well. Well done, Les!

As the weather turns cooler, we all look forward to the approaching Fall Season, which includes FALL CLEAN UP day on Saturday, October 21<sup>st</sup>, and the MOORING PULL, on Saturday, Nov. 4<sup>th</sup>. We need all the help we can get on both days, so please attend if you can. Other fall events include the Family Social on October 14<sup>th</sup> at the pavilion and the Halloween Party on October 28<sup>th</sup>, also at the pavilion. See details on these and other events later in this newsletter, or on the website. You will also find information on our upcoming Holiday Season, to include the Holiday Decorating Contest, Wine & Cheese social, and Santa's visit. There is also a new event, the Children's Christmas Party. I look forward to seeing you at these gatherings.

Thank you,

**Sonny Hayes**

## CICA Survey - 2006

Please complete the below survey and mail to CICA, PO Box 150, North East, MD 21901 or deliver to Sonny Hayes at 79 Racine Rd., not later than November 1, 2006. You can also fill out and submit the website directly over the web by going to: [www.chesapeakeisle.org](http://www.chesapeakeisle.org) and click on the SURVEY picture or use [www.chesapeakeisle.org/survey/survey2006.php](http://www.chesapeakeisle.org/survey/survey2006.php)

---

As your new CICA President I would like to establish some priorities for the upcoming year. The questions below have been designed to solicit your input in this process.

1. In order of priority, the most pressing issues the Board of Directors must address are:
  - a.
  - b.
  - c.
  - d.
  
2. In order of priority, the improvements or additions you would most like to see to make Chesapeake Isle a better place to live, retire or raise a family, would be:
  - a.
  - b.
  - c.
  - d.
  
3. Generally, I think the Community should spend more money on .....
  
  
4. Generally, I think the Community should spend less money on .....
  
  
5. I have not been a regular paid member of the civic association in the past years or am not currently a paid member, because .....
  
  
6. I would be willing to discuss the above with the President/ Membership Chairperson. Yes  No

Name \_\_\_\_\_ Address \_\_\_\_\_

### A Message From The Membership Committee Chairman

It has been my honor to serve as your Membership chairperson for the past ten years. When I began my tour of duty a decade ago, we had 217 paid families for that year. That number grew steadily, but so very slowly, over the next couple of years. The 2005 year was a historic one for us ... the first time that every single property owner paid their fair share to support the Chesapeake Isle community.

As for this year, 292 families had paid their 2006 maintenance fees on their lots as this newsletter "went to press" and only 4 remained un-paid. During my first year, there were 210 homes in the Isle. This month, the 258<sup>th</sup> home is being built on Basin Drive. I have had the wonderful opportunity to call on the first homeowners of those four dozen new homes and, most of the time, to be their first contact with our community and the civic association. I have immensely enjoyed sharing their excitement and anticipation of being owners here.

In addition, there were probably close to a hundred existing homes that sold, where I could also be the first contact with people who were so happy to be here. I'll remember all of them fondly.

You will be hearing in the near future of new co-chairs of the membership committee. I hope you will support their efforts to serve you as well as you supported me. I hope they will enjoy working with you and other new folks as they arrive here as much as I have.

Best regards, **Les Fritz**

### Annual Meeting and Elections

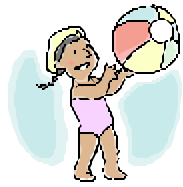
Chesapeake Isle's annual meeting was held on Sunday, August 27<sup>th</sup>. You can view the text of the meeting minutes on the website at <http://www.chesapeakeisle.org/board/minutes.html>. During the elections, the 3 current board members who ran again were elected to second terms of office. They are: Janet McKenna, Brian Clare, and Sonny Hayes. We welcome one new board member, Chris Ann Szep. Our only departing board member is Gordon Osborne, and we thank him for his service to the community. See the complete list of Board Members and Officers later in this newsletter.

### Driveway Snow Plowing Program

It is that time of year when we must face the possibility of snow storms during the coming winter months and decide whether we want to gamble on a light winter or buy some snow-plowing insurance. The Board will continue their policy of contracting to plow private driveways following appreciable storms in the Isle. Any member who is interested in signing up for this service should fill out and return the contract included in this newsletter along with the required non-refundable check by November 15, 2006. No applications will be accepted after this date. See the attached contract for more information. Please remember that we can accept only the first 35 contracts.



### Beach News



Our beach was well-used this summer, with many enjoying the playground, swim floats, basketball court, pavilion, and shuffleboard. The destructive activity that had plagued the beach earlier in the season calmed down.

After the swimming ban was lifted by the Health Department, the beach remained open for the rest of the summer.

One of the swim floats came loose in late September, and it was decided to pull it in early rather than re-install it. That's one less job to do on work day!

We are looking forward to a good turnout on clean up day, October 21<sup>st</sup>. Please lend a hand to your community!





## Harbor news

With the turning of the leaves, it's time again to begin putting our boats in storage and for making the necessary arrangements to protect them through the winter. It was a good boating season with few serious incidents, with the exception of Ernesto! We are grateful that no one suffered any injury and all are safe.

*Activities in the harbor area since the last newsletter have been:*

- New wear boards were installed on the old pier float.
- Replaced missing connector pins for the new pier float.
- Installed depth marker board that was made by Allen Embon on new pier.
- New wheels have been installed on the ramp at the new pier.
- New board material purchased, painted and installed on the bulletin board.
- Black top was installed in the cracks of boat ramp as a temporary fix.



To my knowledge, on two separate occasions, a total of eight boats were vandalized during August and late September. The DNR Marine Police have been informed. Some missing equipment has been recovered and returned to the rightful owners..

Ernesto caused nine boats to break loose from their moorings and ended up in our cove. Many volunteers assisted in the recovery of said boats that Friday and Saturday. Thanks to the women who supplied coffee and pastries during the rain. Bill Osborne generously allowed us to use his power boat as a rescue boat. Some damage was experienced by some boat owners and they are handling these repairs individually. At this time three moorings are still unaccounted for and searching continues.

## REMINDERS

- Fall Clean up is upon us and is scheduled for October 21, 2006. Volunteers are always welcome at the harbor. Beverages and donuts will be served!
- Mooring pull has started with 20 mooring pulled to date. The early start is to enable us to remove all 93 moorings by the pull date of November 4, 2006. This is a large undertaking and requires plenty of volunteered labor. Thanks in advance for your labor and support. If you haven't been notified yet, **please call Bill Day (410-287-9432) if your mooring can be pulled between October 16<sup>th</sup> and November 4<sup>th</sup>.** Please also call me if you can assist in this task. Volunteers will also be needed on the day of the 4<sup>th</sup> for delivery of the moorings to the homes. Again, beverages and donuts will be served!

We are presently working to have new ramps and gangway for both piers. The old pier gangway is in a very unstable state.

NOTE: Again, we must emphasize that AT NO TIME are crab traps to be left unattended in the harbor area. As is posted, no fishing is allowed from the new pier. This is for the safety of the community and for the boats.

## Library Update



Our library will be open for your reading pleasure from 10 to 11:30 AM every Saturday morning until the end of October. We have lots of new and interesting books, videos, etc. to share with you. "Stock Up" with books from your favorite author during the off season.

This season we had 25+ volunteers staffing the library on Saturday mornings and/or helping with library maintenance during the weekdays. Many thanks to all who participated in making this service to our community a success. It would be an impossible task without you. You make it happen so smoothly.

Our thanks to all of the Isle who contributed books, videos, etc., to share with each other. We appreciate your generosity! Due to the limited spaced on our shelves, we ask that you limit your donations to items of a contemporary or classic nature that would be of current interest to our patrons.

We also extend our thanks to the Elkton Library for their generous donations to our Chesapeake Isle library. They have also given us 25 "LARGE PRINT" books, which are delightful to read, as they are definitely "easy on the eyes". We have a special section set aside for them.

The Cecil County Public Library has a marvelous service called the "Book Buddy" program and will deliver books and other library materials to anyone here on the Isle who qualifies for their outreach program and has need of the service. The "Book Buddy" program is designed to provide access to library material for those unable to get to the library for health reasons (those who are homebound, nursing home patients or anyone with a long-term inability to get to the library due to illness). Materials can be borrowed and are delivered on a monthly basis. There is no fee for this service. Please contact the coordinator, Mrs. Katherine Campbell of the CCPL at 410-996-5600 ext. 141 if you are interested in participating.



It has been a successful season with many enjoying and using our expanded library. During the "off season", please contact Joan Ferrick at 410-287-8595 if you need reading or other library materials, or if you have donations, so a convenient time can be arranged. The library will re-open in April, 2007.

## Fall Cruise

The Fall Cruise enjoyed beautiful, warm weather... as we go to press, we wonder if all who went are ever coming home! Details about their travels will follow in the next newsletter.....

## Neighborhood Watch

As always, we are seeking new volunteers for the neighborhood watch program. Neighborhood Watch seeks to provide a "watchful eye" in our community with a goal of stopping trouble before it has a chance to happen. Our neighborhood watch group is looking for new volunteers to patrol the streets & community areas, in their vehicles, on the weekends. Volunteers work in pairs, and will be assigned approximately one shift per month. Please call Gordon & Jorja Osborne at 410-287-8290 for more information

For those of you who are current volunteers, you should be have already received or will be receiving a new schedule shortly. Volunteers are reminded to let your coordinator, Jorja Osborne, know if you will be out of town during the winter months. Also, please let her know when you will or will not be available during the winter so that the Winter schedule can be made up.

### Kudos

The *Second Annual Ice Cream /Bingo Night* in August was enjoyed by all because of the excellent job **Sue Seeley** and her committee did to put it together. The ice cream sundaes were delicious and generous, and bingo was a blast! I think almost everyone got some trinket to take away. Thanks to all of you for helping to make this another successful community event.

Also, big thanks go to the committee who helped set up and clean up with **Pat Day** at the *potluck dinner* held after the Annual Meeting.

### Ongoing Activities

#### Extend A Hand



Please remember that if you know a neighbor who is in need of assistance in a time of need or condolences for the loss of a loved one, contact **Karen Dryden** at 410-287-9598 or [drydenwhkr@aol.com](mailto:drydenwhkr@aol.com). We are here to help!

#### Craft Group News

The **Beading Group** continues to meet on the 3rd Monday of each month at 6:30 p.m. at the pavilion. (The next session is on Monday, October 16, followed by November 20<sup>th</sup>) If you are interested in joining this group, please contact **Diana Hawley** at [dianahawley@chesapeakeisle.org](mailto:dianahawley@chesapeakeisle.org) or 410-287-7596. We would also like to hear if anyone is interested in beading during the daytime hours. If so, please contact Pat Day (410-287-9432 or [bandpday57@aol.com](mailto:bandpday57@aol.com)).

A **Quilting Session** started on October 9<sup>th</sup> at the home of **Iva Burroughs**. She will be happy to instruct anyone who is interested in learning the techniques of beginning quilting. Please contact Iva at 410-287-7274 or [ivaburroughs@chesapeakeisle.org](mailto:ivaburroughs@chesapeakeisle.org).

### Coming Soon: Book Club and Game Days!

In addition to the traditional annual events, the Community Events Committee strives to plan new and exciting opportunities and fun gatherings for all of our community members. The following two groups/events will be starting soon:

**Chesapeake Isle Book Club:** Do you enjoy reading? Would you like to meet with neighbors to discuss books in a social setting? Then join the *book club*! Open to both men and women! Contact **Diana Hawley** ([dianahawley@chesapeakeisle.org](mailto:dianahawley@chesapeakeisle.org) or 410-287-7596) if you are interested.

**Game Days:** If you enjoy *playing card and/or board games*, then don't miss the chance to gather with your neighbors for some friendly competition! This can be during the day or in the evening. Contact **Pat Day** (410-287-9432 or [bandpday57@aol.com](mailto:bandpday57@aol.com)).

## Community Events Committee Meetings

Are you interested in helping to plan social events for the community? Do you have new ideas that you would like to share? Come to our meeting! The Community Events committee meets on the second Monday of every month at 7:00 p.m. usually at the pavilion unless otherwise notified. The next meeting will be held **Monday, November 13, 2006, at 7:00 p.m.** at the pavilion. All CI CA members are welcome to attend and join the committee.

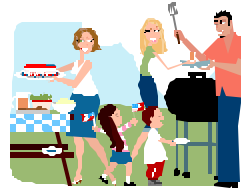
## Upcoming Events

### Family Social

Do you want to meet other families who live in your community? Then don't miss the fun at the last family social of the year!



Saturday, October 14, 2006  
4:00 p.m. – dark  
At the pavilion



Cold beverages and paper products will be provided by the Community Events Committee. We will be having a cookout, so please bring a side dish to share.

If you can make it, please RSVP by Thursday, October 12 to Diana Hawley (410-287-7596 or [dianahawley@chesapeakeisle.org](mailto:dianahawley@chesapeakeisle.org)) so that we have enough food and drinks. Hope to see you there!!

---

### Fall Clean Up: Saturday, October 21, 2006

Fall is just around the corner, and it will be time to clean up from all the summer fun! Come and meet your neighbors while you help make the Chesapeake Isle community a great place to live. It starts at 8:30 a.m.; go to either the Pavilion or Harbor for assignments.

- Bring your tools (marked with your name)
- Meet at the pavilion or the harbor at **8:30 am** for your work assignments.
- A covered dish social will follow at 12:00. Meat, beer, soda, and paper goods will be provided by the CI CA Community Events Committee. Please bring an appetizer, covered dish, or dessert (enough to feed at least 8 people).

We look forward to seeing you there!



# HALLOWEEN PARTY AND TRICK-OR TREATING

Saturday, October 28, 2006

3:00 – 5:00 p.m. (Party at the pavilion)



The annual Halloween party is right around the corner! Dress up in your best costume and join the fun and games. Donations of juices, cupcakes, brownies, etc. from parents would be appreciated. Community trick-or-treating will follow; please leave your porch lights on to welcome the children. If you have questions, please call **Chris Ann Szep** at 410-287-2504.

## Holiday Events

### House Decorating

Do you enjoy decorating your house for the holidays? Now is your chance to show off your talents! A panel of judges will go around the community over a period of several days and nights **December 15-24** to make their selections.

**THREE PRIZES WILL BE AWARDED.**

Winners will be notified by December 31, 2006. The results will be published in the January 2007 newsletter. If you have questions, please call **Sue Clare** at 410-287-5372.



### Children's Christmas Party

Don't miss the fun at this NEW event!!! School-age children (preschool - grade 5) will enjoy a bead craft, a game, and a snack. Parents are encouraged to stay and watch your child enjoy the party!

Saturday, December 2, 2006

1:00 – 2:00 p.m.

At the pavilion



**RSVP: MUST reply by November 20, 2006**

Mary Abel (410-287-4393)

Please leave a message with the following information:

- Parent's name
- Phone number
- Number of children attending
- Grades of children attending (appropriate for children in preschool through grade 5)

**Are you a teen or adult who wants to help with this event??**

Bakers and Party Assistants are needed! Please contact Mary (410-287-4393)

**Wine and Cheese Social**

**Sunday, December 3, 2006  
4:00 – 6:00 p.m  
Janice and Bill Newkirk’s Home  
55 Arden Rd.**



**Questions?  
Contact Sandy Biedermann  
410-287-8766**

**Bring your favorite wine and hors d'oeuvres, enough to serve 8 people. A non-alcoholic punch will also be served. To protect those who have food allergies, please attach a note to your dish if it contains shellfish or peanuts.**

**Please remember the needy this holiday season! Bring a canned good or non-perishable food item to this event!**



**♪ Christmas Caroling ♪**



**This has been a time-honored event but will be sorely missed this year if we cannot find someone to chair. The guidelines are available and the help is here; we just need someone to take it and run. If you are interested in helping us and sharing the holiday spirit, please contact Pat Day at 410-287-9432.**



**4**

**Santa Visit**



**To schedule Santa’s visit to your house (either in the afternoon or early evening) on Christmas Eve (December 24, 2006), please call Carl or Ruth Killian (410-287-6592) or send an email requesting a visit to [rgkillian@yahoo.com](mailto:rgkillian@yahoo.com).**



## What's Cooking This Holiday Season?

### CHRISTMAS BREAKFAST CASSEROLE

(Contributed by Iva Burroughs)

7 slices white bread, crusts removed and cubed  
2 cups (8 ounces) shredded cheddar cheese  
6 eggs  
3 cups milk  
1 teaspoon ground mustard  
½ teaspoon salt  
¼ teaspoon pepper  
6 bacon strips, cooked and crumbled

In a greased 11-in x 7-in x 2-in baking dish, combine the bread cubes and cheese. In a large bowl, whisk the eggs, milk, mustard, salt and pepper; pour over bread and cheese. Top with bacon. Cover and refrigerate overnight.

Remove from the refrigerator 30 minutes before baking. Bake, uncovered, at 350 degrees for 50-55 minutes or until a knife inserted near the center comes out clean. Yield: 6-8 servings

#### Just a reminder...

The Progressive Dinner is scheduled for March 10, 2007, and volunteer hosts are needed for the appetizer, entrees, and dessert. If you are interested in hosting one of these courses, please contact Karen Dryden at 410-287-9598 or drydenwhkr@aol.com. More details will be included in the January 2007 newsletter.

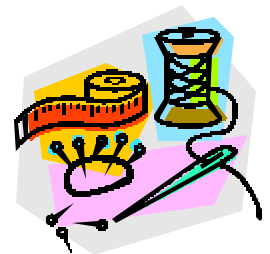
#### Special Event

*Mark Your Calendars Again...*

*For the Annual Craft Show hosted by Anne Bates & Ruth Killian*

- November 18<sup>th</sup>, 4:00 – 8:00 p.m.
- November 19<sup>th</sup>, 9:00 – 5:00 p.m.

*To be held at: 2 Gull Circle, Chesapeake Isle (410) 287-6244  
New items every year... check us out!*



**Reasons why you should get your newsletter by email:**

1. Save a tree - each newsletter we send by email reduces copying
2. Get your newsletter faster - you don't have to wait for the mail or delivery team
3. Less clutter in your home
4. Save your newsletter to your computer so you don't have to find the paper version
5. Save copying & postage charges for the community association. It's a way of volunteering without having to do any work!
6. Each family member can get their own copy of the newsletter delivered to their home or business email address
7. Enjoy the newsletter in full color
8. Enlarge the viewing size to make it easier on the eyes.

You can sign yourself up at our website, [www.chesapeakeisle.org](http://www.chesapeakeisle.org) or  
Email [andrea@netzero.net](mailto:andrea@netzero.net) or call 410-287-6568 to be added to the list



## CICA Members Classified Ads

All members in good standing can advertise items for sale or services offered to the community in any newsletter. The following listings are offered for your attention and consideration.

**Skidsteer Service** – Call Chesapeake Isle resident ED EARLE – 410-287-7268

- Topsoil Delivered and Graded
- Driveways – Stone Crusher Run or Blacktop Millings
- Snowplowing – by appointment only (no contracts)
- Shed Relocation/Tree Removal/Lot Clearing
- Basement/Garage Rubbish Removal
- Insured – References available from jobs done in Chesapeake Isle
- Call me about your project – it can be done!

**FOR SALE: CQR PLOUGH ANCHOR w/25LB SWIVEL**  
ASK \$225.00- compare to West Marine catalog new \$495.00  
Christy & Regan Michaud  
410-287-7024  
443-655-6398 (CELL)



**FOR SALE: 19ft Sea Pro outboard** with 90 hp Mercury motor. Excellent condition and ready to go. \$6500. Call 410 287 2077

**FOR SALE: 1976 ODay Day Sailer sailboat.** 17' with Main Sail, Jib and Trailer. Can view at 18 Basin Drive, Chesapeake Isle. \$750.00 Call Michael at 410-287-7854 or email [mpantalone99@hotmail.com](mailto:mpantalone99@hotmail.com)

**FOR SALE: 23 foot 1973 O'day sailboat & 9.9 hp 1989 Mercury outboard.** PRICE: \$2,000  
Sails, original sales brochure and manuals included. Contact Mimi and Mike Szep  
Phone: **(410) 287-5618** E-mail [mimi@szep.net](mailto:mimi@szep.net) or [mikesr@szep.net](mailto:mikesr@szep.net)

**FOR SALE: 16 foot Hobie Cat,** contact Mike Szep.  
Phone: **(410) 287-5618** E-mail [mimi@szep.net](mailto:mimi@szep.net) or [mikesr@szep.net](mailto:mikesr@szep.net)

**FOR SALE: 3 Piece Solid Wood Bedroom Suite-**

- Queen-size Sleigh bed (solid wood frame and rails), 6 drawer dresser, bedside table (with drawer). Only five years old, light to medium shade stain. Good condition. Paid \$2800, asking \$950. **Call Brian or Jean at 410-287-0659.**
- **Office/Computer desk.** Solid oak, 3 drawers (1 locking). Large work surface (54" x 29"). Paid \$800 five years ago, asking \$500. **Call Brian or Jean at 410-287-0659.**
- **Panasonic camcorder (model PV-L658).** 23x hi-def zoom, 50x digital zoom, digital EIS, 3.2" LCD monitor flip-screen, lots more features! All cables, carry case, battery, charger, included. Paid \$600, eight years ago, asking \$250. **Call Brian or Jean at 410-287-0659.**
- **Full-size Futon bed.** Solid wood, extra thick mattress, end flip-top beverage tables. Paid \$350 five years ago, asking \$225. **Call Brian or Jean at 410-287-0659.**

**Chesapeake Isle Civic Association Board Members**

<i>2004-2007 Term</i>	
<p><b>Bill Day</b> 83 Caldwell Rd. (K-10) 410-287-9432 <a href="mailto:bandpday57@aol.com">bandpday57@aol.com</a></p>	<p><b>Jennifer Scott-Greenfield (Secretary)</b> 55 Rollins Rd. (M-06) 410-287-2906 <a href="mailto:jennascottg@yahoo.com">jennascottg@yahoo.com</a></p>
<p><b>Ward Keever</b> 127 Cliffview Dr. (F-12) 410-287-2077 <a href="mailto:wkeever@ixiusa.com">wkeever@ixiusa.com</a></p>	<p><b>Susan Schooley</b> 107 Caldwell (K-15) 410-287-0187 <a href="mailto:sschoolee@aol.com">sschoolee@aol.com</a></p>
<i>2005 - 2008 Term</i>	
<p><b>Bill Dryden</b> 210 Rolling Ave. (G-10) 410-287-9598 <a href="mailto:drydenwhkr@aol.com">drydenwhkr@aol.com</a></p>	<p><b>Mike Burroughs</b> 5297 Turkey Point Rd. (K-16) (410) 287-7274</p>
<p><b>Art Wood</b> 302 Rolling Ave. (F-04) 410-287-0128 <a href="mailto:woodywood_2@netzero.net">woodywood_2@netzero.net</a></p>	<p><b>Bill Tucker (Treasurer)</b> 75 Caldwell Rd. (K-09) 610-430-1982 410-287-1587 <a href="mailto:tuckerhaus@verizon.net">tuckerhaus@verizon.net</a></p>
<i>2006-2009 Term</i>	
<p><b>Brian Clare (Vice-President)</b> 19 Gull Circle (E-20) (410) 287-5372 <a href="mailto:claregrange@netzero.com">claregrange@netzero.com</a></p>	<p><b>Sonny Hayes (President)</b> 79 Racine Rd. (L-10) (410) 287-7588 <a href="mailto:hayes5626@aol.com">hayes5626@aol.com</a></p>
<p><b>Janet McKenna</b> 5296 Turkey Point Rd. (P-08) 410-287-1277 <a href="mailto:janetmckenna@chesapeakeisle.org">janetmckenna@chesapeakeisle.org</a></p>	<p><b>Chris Ann Szep</b> 40 Racine Rd. (H-18) 410-287-2504 <a href="mailto:chrisann@szep.net">chrisann@szep.net</a></p>

**Chesapeake Isle Seasonal Private Driveway  
Snow Removal Contract**

Chesapeake Isle Civic Association will plow Member's private driveways during the winter beginning in December, 2006 and ending in March 2007 for a seasonal fee subject to the following conditions:

1. It is intended that first priority be given to clearing snow from the community roads.
2. Property Owner/Member must be present when plow committee stakes driveway.
3. Chesapeake Isle Civic Association will not be responsible for any damage caused by plowing operations
4. Driveways will be plowed only if snow is three or more inches in depth
5. A standard driveway is considered to be sixty feet or less in length
6. Seasonal fees for plowing a standard driveway (CICA MEMBERS ONLY) is \$75.00
7. Fees for unusual driveways will be negotiated.
8. Contract must be signed and returned by November 15, 2006 with full payment to:

CICA  
c/o Brian Clare  
19 Gull Circle  
North East, MD 21901

No driveways will be plowed without a signed contract and full payment. Only 35 contracts will be accepted in accordance with CICA's equipment and manpower capabilities. Contracts will be accepted on a first-come, first serve basis, which will be determined by the postmark date on the returned contract.

9. Tractor will plow as close as possible. The driver will not do hand-shoveling
10. Contract must be approved by a member of the plow committee at the time of staking.
11. Fees are non-refundable

---

I agree to the above conditions. \_\_\_\_\_  
Signature of Member

Name: (Please print) \_\_\_\_\_

Lot #: \_\_\_\_\_

Telephone #: \_\_\_\_\_ Date: \_\_\_\_\_

Signature of Plow Committee Chair: \_\_\_\_\_